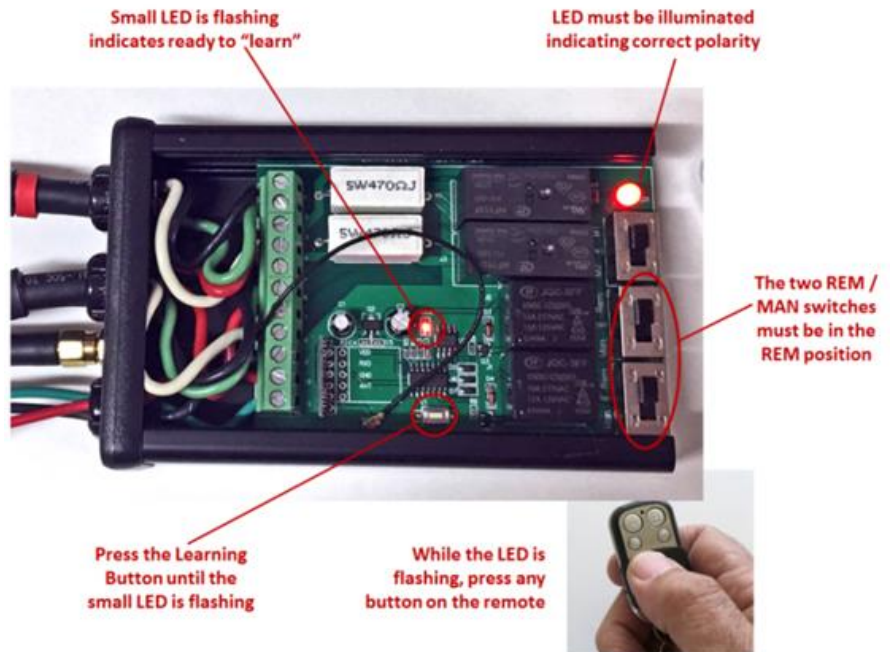


Adding or Replacing Remote Transmitter Model B Series Controller

If you are adding or changing the key fob remote, you must program the control module receiver unit to recognize the new remote transmitter.

- Remove the lid from the control unit by removed four screws from end panel with clear plastic windows and the top two screws from end panel with electrical connectors.
- Find the program button on on the printed circuit board.
- Turn on the vehicle ignition to get power to the control unit (you may have to start the engine to ensure power to the controller)
- While holding the key fob, momentarily press the “learn button” on the circuit board. The LED should flash.
 - If you press and hold the learn button for a few seconds, you will erase all memory of any transmitters. If this occurs, then you must re-program all transmitters.
- Immediately after pressing the learn button, while the LED is flashing, press the any button on the remote transmitter. The LED on the control unit should go out.
- Your transmitter should now be programmed to the control module.
- Repeat for additional transmitters.
- Verify operation of all transmitters.
- Replace the control unit cover and end panel.



4-Button Remote Shown.
Procedure same for a 2-
button remote