



Audi RS4 Install Tips

Important Note:

Installation tips generated from personal feedback from customers. Results are not guaranteed and are provided as a suggestion only.

Accessing the Vacuum Solenoid Valves

Prior to installation, locate the vacuum solenoid valve. It should be found on the left side of the luggage compartment behind the trim panel. The solenoid valve will look similar to one these two solenoid valves ...

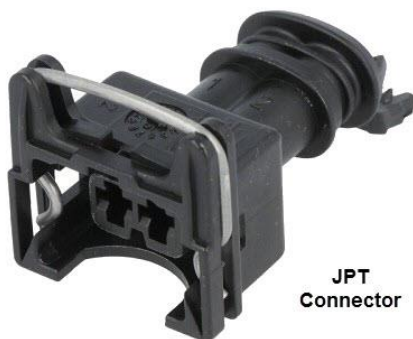


When you remove the inner trim panels to gain access to the solenoid valve, you should find the valve located near a vacuum accumulator tank. There

should be vacuum lines attached to the ports on the valve and an electrical connector attached to the valve. The following photo illustrates the appearance, but the solenoid valve electrical connector may be different than depicted in this photo ...

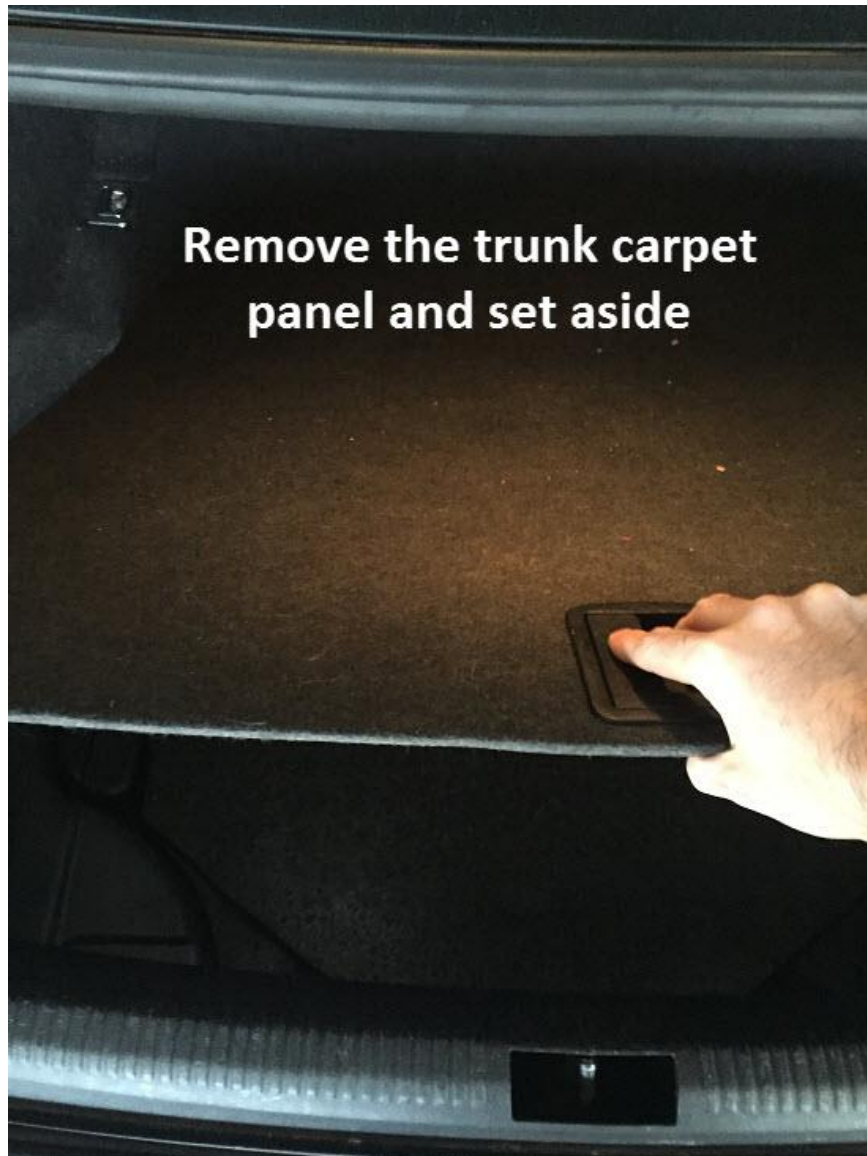


Once you have located the solenoid valve and connector, determine which of these two connectors you have ...



If you have the VW-Audi Connector, you will need the Forza Lambo Adapter plugs. If you have the JPT connector, you will not need the Lambo plugs.

The following procedure was provided by an Audi RS4 owner and pictorially provides the full installation procedure for the Model B2A on the Audi RS4.



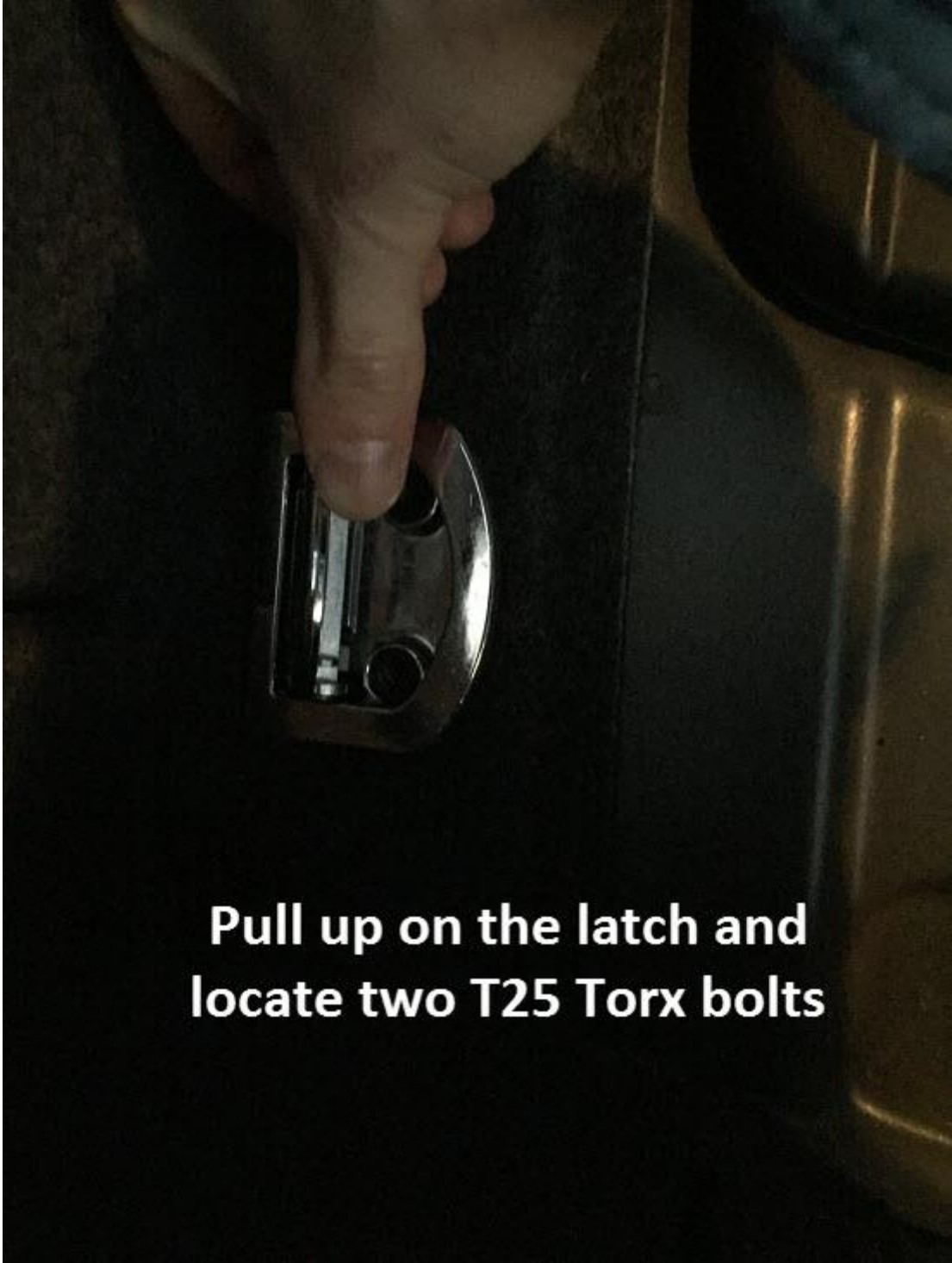
**Grab the
plastic part at
the end and
pull up**





**There are
tabs
attached
to the
plastic
panel**

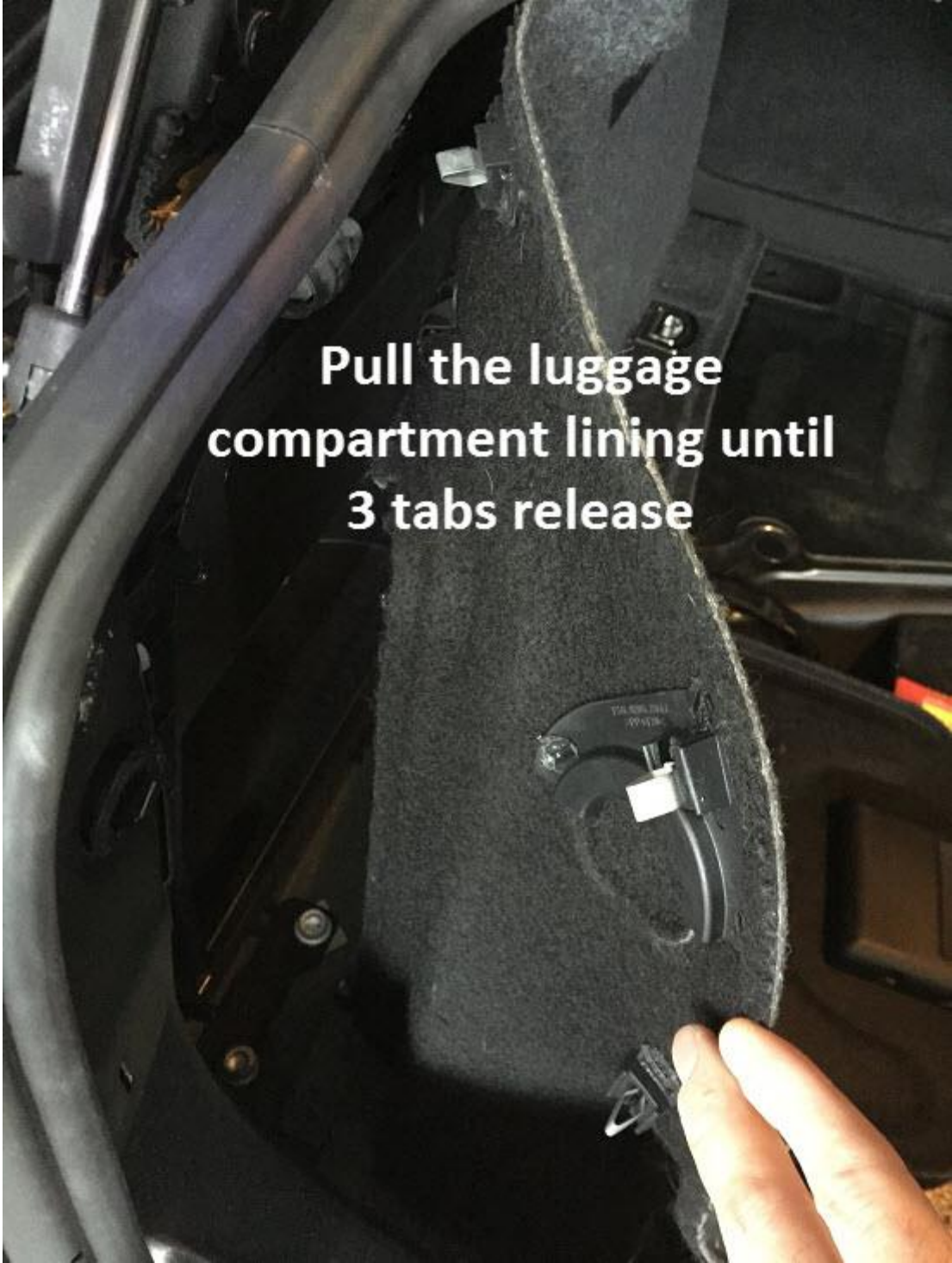




**Pull up on the latch and
locate two T25 Torx bolts**

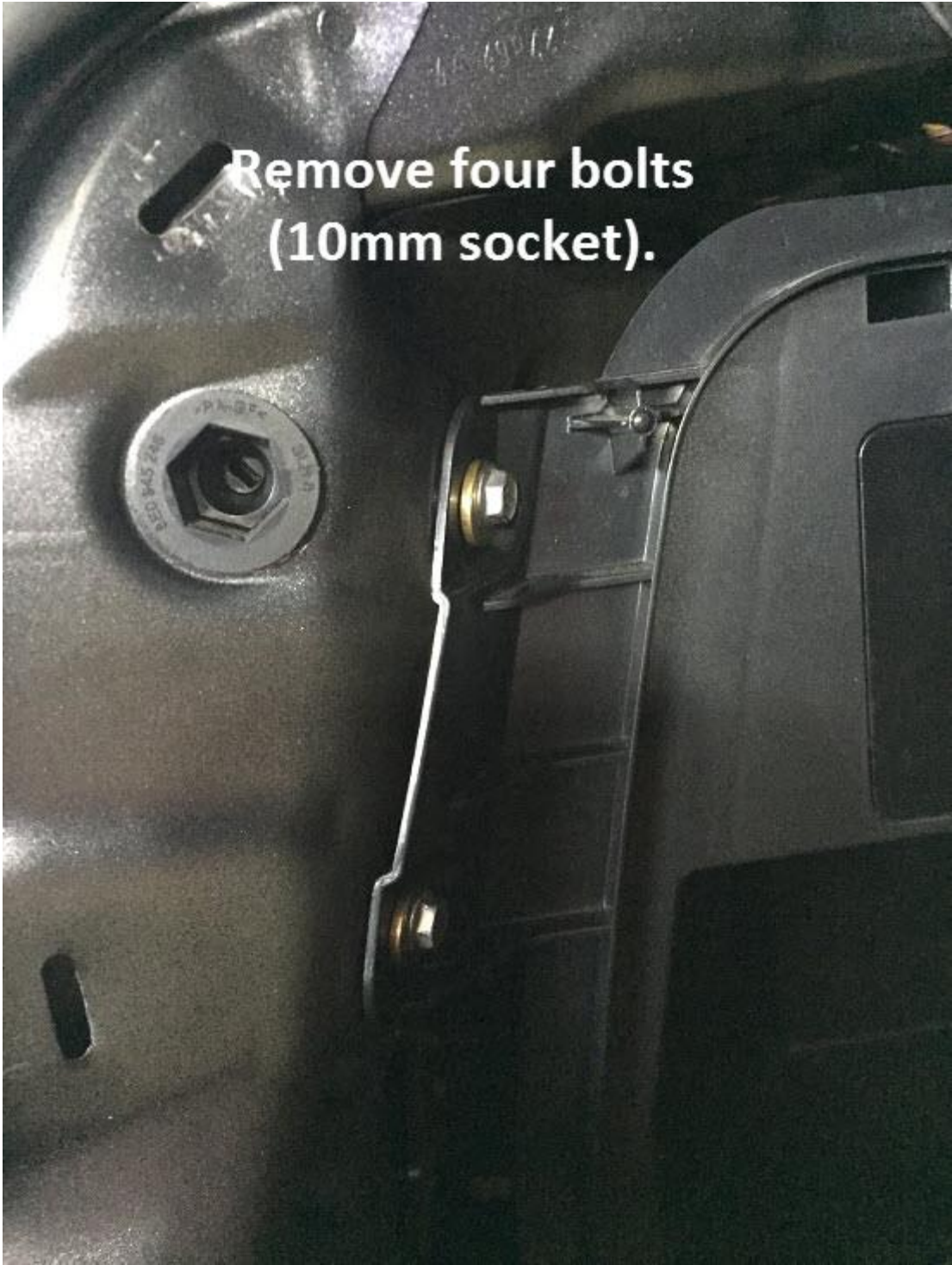


**Remove two T25 Torx
bolts**

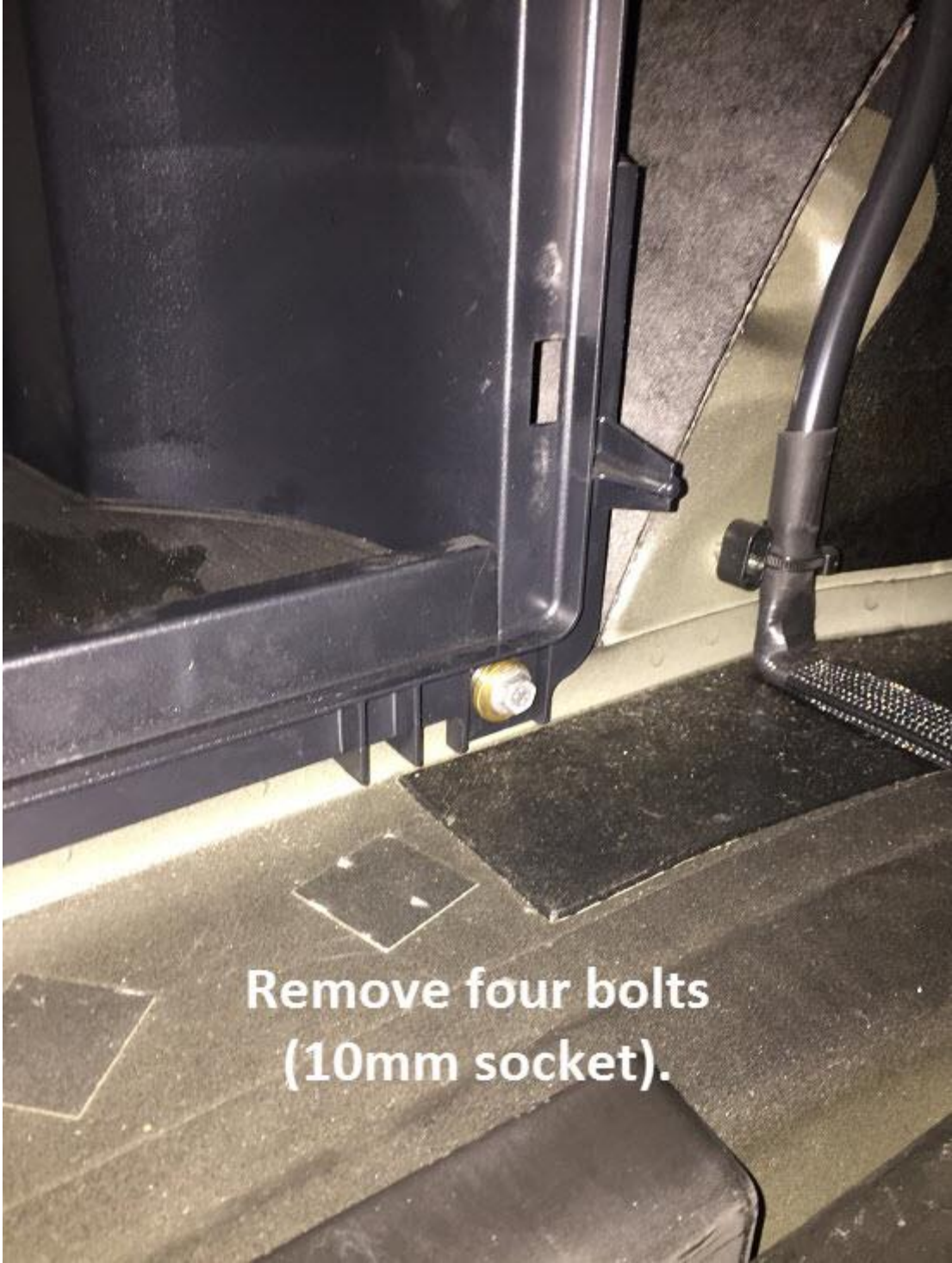




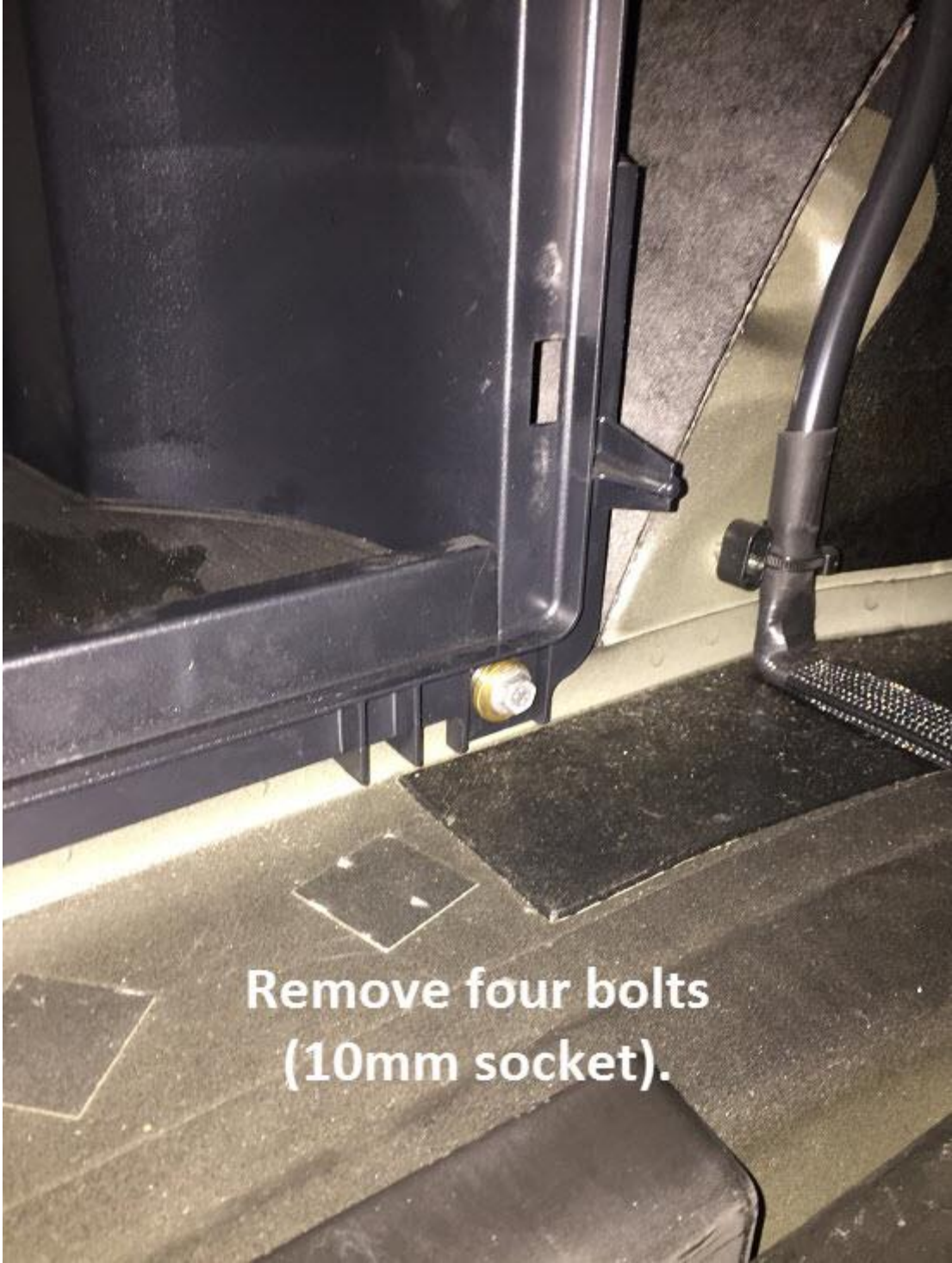
**Pull lining off the hook
located farther behind
the last tab**



**Remove four bolts
(10mm socket).**



**Remove four bolts
(10mm socket).**



**Remove four bolts
(10mm socket).**

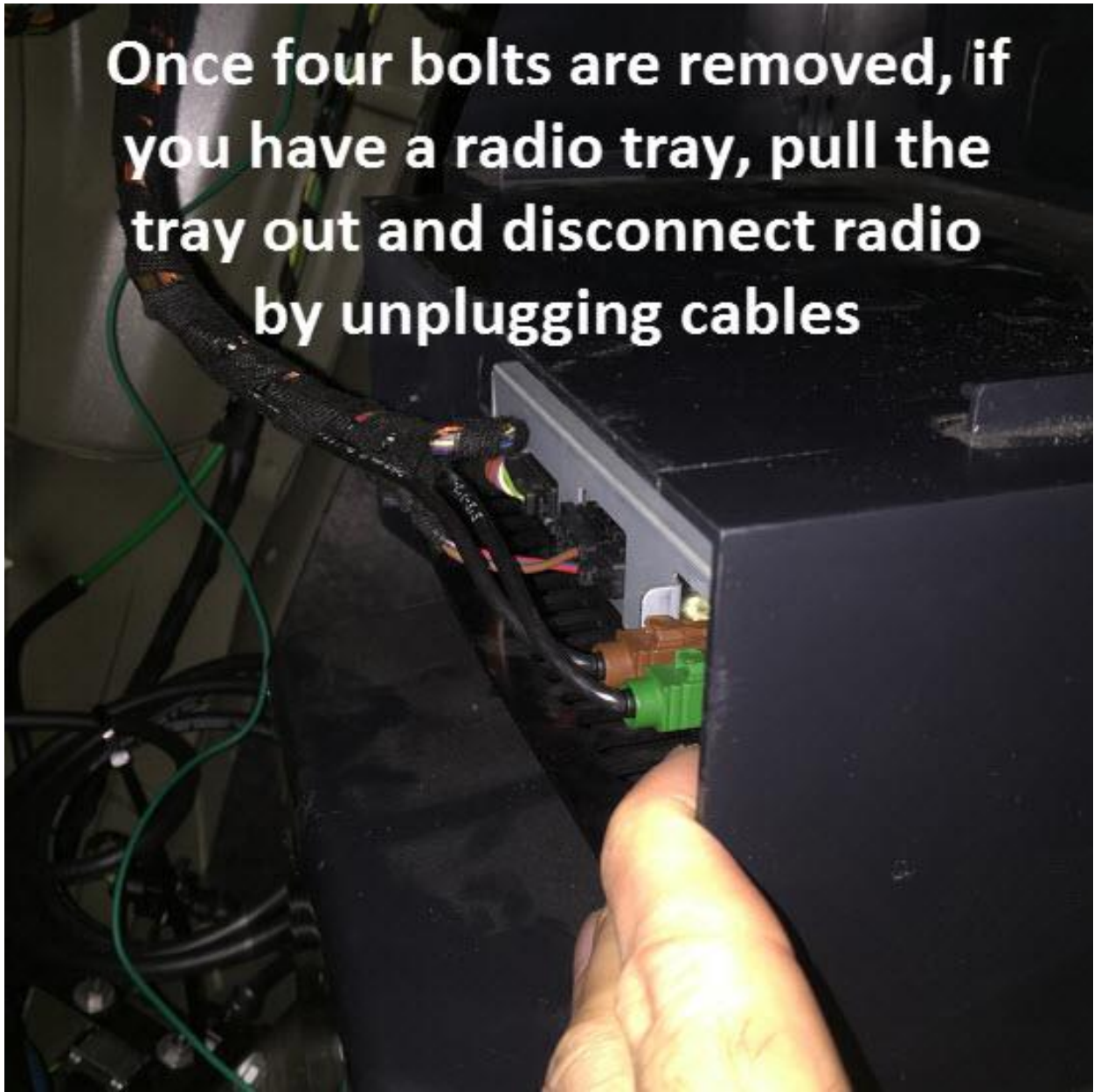


**Remove four bolts (10mm
socket). Take care not
break plastic piece as was
the case here.**



**View of luggage
compartment interior
with panels removed**

Once four bolts are removed, if you have a radio tray, pull the tray out and disconnect radio by unplugging cables



**Locate vacuum solenoid
valve and disconnect
electrical cable**



**Plug the female connector on
the Forza cable to the vacuum
solenoid valve ...**





**... and plug
the male
connector on
the Forza
cable to the
connector that
you just
disconnected.**







Once everything is connected, test the controller function. When you have determined everything is working properly, reinstall everything in reverse order.