

# Forza Componenti



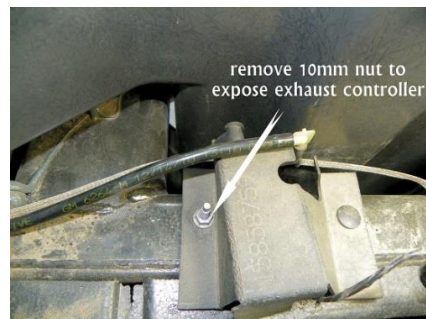
## Corvette C6 Install Tips for 3-Way Controller

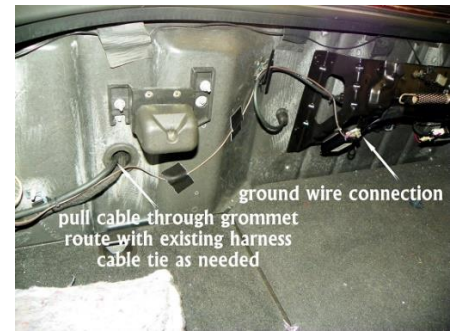
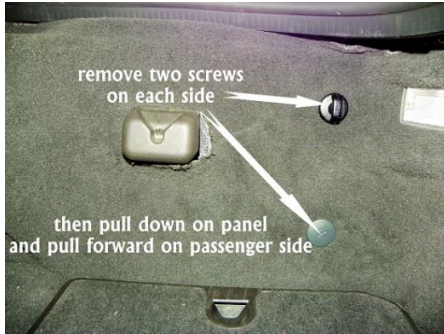
### Important Note:

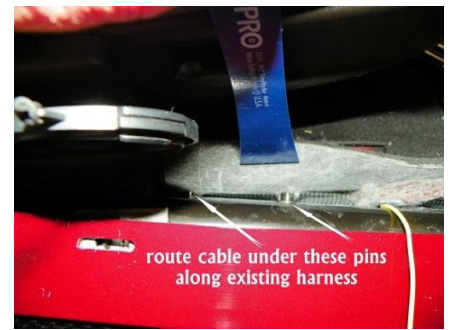
Installation tips generated from personal feedback from customers. Results are not guaranteed and are provided as a suggestion only.

### Accessing the Vacuum Solenoid Valves

The following procedure was provided by a Corvette C6 owner and pictorially provides the full installation procedure for the 3-Way Controller on the Corvette C6.







*Note: You will need to provide additional wire to route power from the fuse block to the rear of the car. We recommend 18AWG or 16AWG stranded wire that is designated for automotive use. Splice into the wire provided with the controller kit. You will need approximately 10 feet of additional wire.*

